

NEW
SINGLE-ENDED BEAM
RL32018S-HE

Stainless Steel, Hermetically Sealed, NTEP Certified 1:5,000 Class III Multiple Cell, IP69K

Interchangeable Products

RICE LAKE WEIGHING SYSTEMS

RL35083 (non-NTEP)..... page 141

VPG SENSORTRONICS®

65083..... page 322

VPG CELTRON®

SQB-HSS..... page 215

Weigh Module Available

RICE LAKE WEIGHING SYSTEMS

RL1800 Series..... page 62



Specifications

Full Scale Output:

3.0 mV/V ±0.05% current matched

Output Resistance:

350 (± 3) ohm

Input Resistance:

400 (± 20) ohm

Material/Finish:

Stainless steel

Temperature:

Compensated range: 14°F to 104°F/-10°C to 40°C

Operating range: -40°F to 150°F/-40°C to 65°C

Seal Type:

Hermetically sealed, IP69K

Safe Overload:

150% full scale

Safe Sideload:

100% full scale

Rated Excitation:

5-10 VDC (15 V maximum)

Combined Error:

0.017% full scale

Insulation Resistance:

>5,000 megohms

Cable Length:

20 ft (6.1 m) PTFE

Cable Color Code:

Red+ Excitation

Black.....- Excitation

Green.....+ Signal

White.....- Signal

Warranty:

Two-year limited warranty

Approvals:



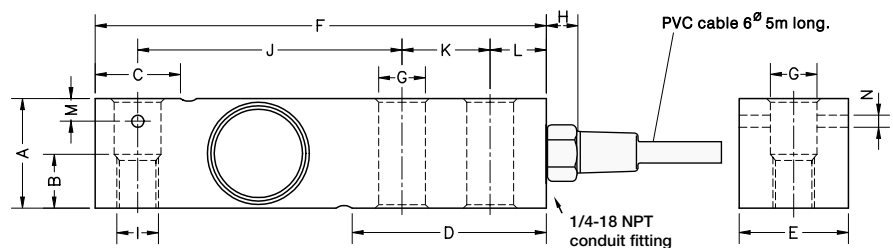
Dimensions

Picture is a representation of actual product

Rated Capacity	A	B	C	D	E	F	G	H	I	J	K	L	M	N
lb/in														
250-4,000	1.24	0.59	0.96	2.20	1.24	5.12	0.53	0.70	1/2-20 UNF	3.00	1.00	0.62	0.25	0.13
5,000-10,000	1.88	-	1.45	2.99	1.63	6.75	0.80	0.70	3/4-16 UNF	3.75	1.50	0.75	-	-
kg/mm														
113.4-1,814.4	31.5	15	24.6	56	31.5	130	13.5	18	1/2-20 UNF	76.2	25.4	15.8	6.5	3.5
2,268-4,535.9	48	-	37	76	41.5	171.5	20.5	18	3/4-16 UNF	95.2	38.1	19	-	-

Order Information

Load Rating	Part#	Est. Weight	Price
250 lb	189174	3 lb	Consult
500 lb	189175	3 lb	Consult
1,000 lb	189176	3 lb	Consult
2,000 lb	189178	3 lb	Consult
2,500 lb	189179	3 lb	Consult
4,000 lb	189181	3 lb	Consult
5,000 lb	189182	5 lb	Consult
10,000 lb	189183	5 lb	Consult



RICE LAKE WEIGHING SYSTEMS

www.ricelake.com | Phone: 800-472-6703

RICE LAKE